

The conversion from Primavera P3 to Microsoft Project 2000

1. Import the program files

Unzip the files to a directory in the hard disk, for example, *C:\P3WIN\p3_psl*

2. Make the PSL file

Click *Start*, and then choose *Run*.

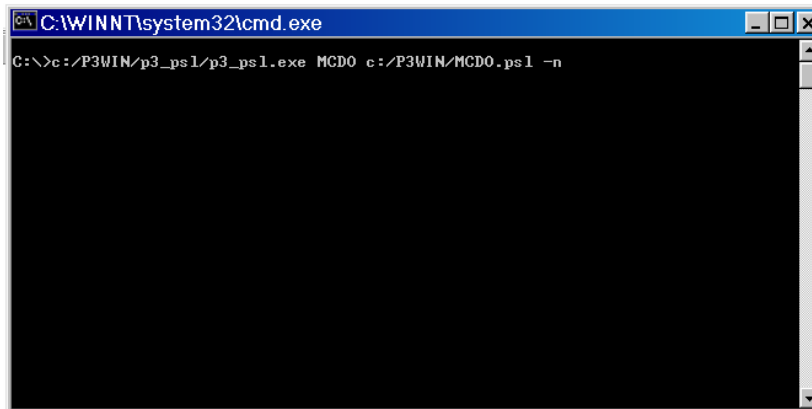
Type *cmd* in the command line.

Type the command:

```
-program directory\p3_psl.exe -project name -PSL directory\ PSL filename.psl -n
```

For example, you may type:

```
C:\P3WIN\p3_psl\p3_psl.exe MCDO C:\P3WIN\MCDO.psl -n
```

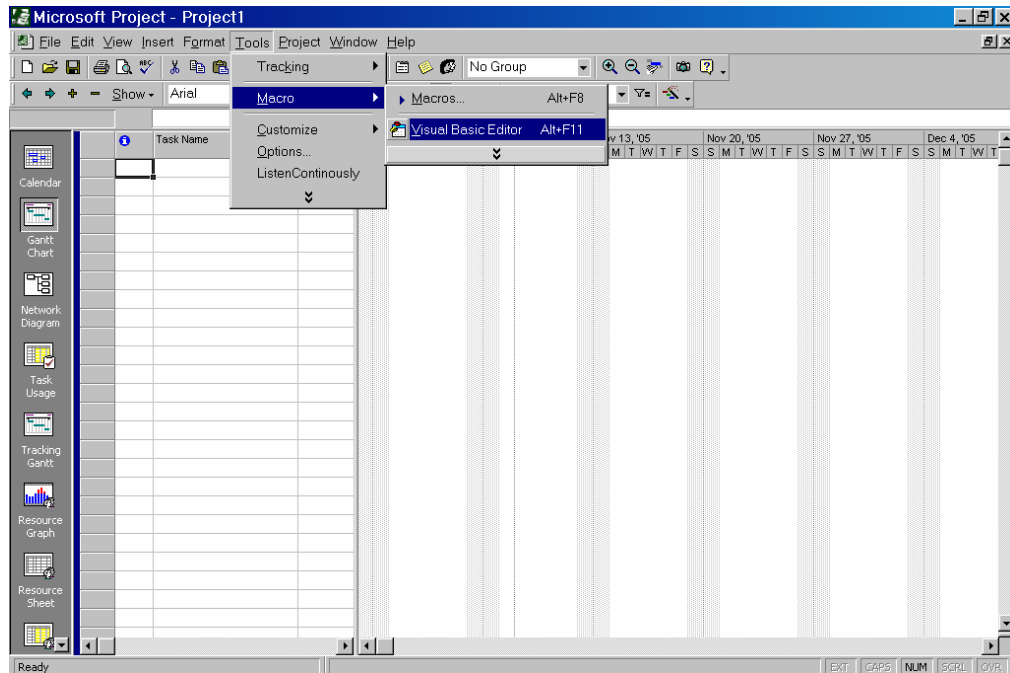


Then, the PSL file with the filename you typed should be in the PSL directory.

3. Input Macro file to Microsoft Project 2000

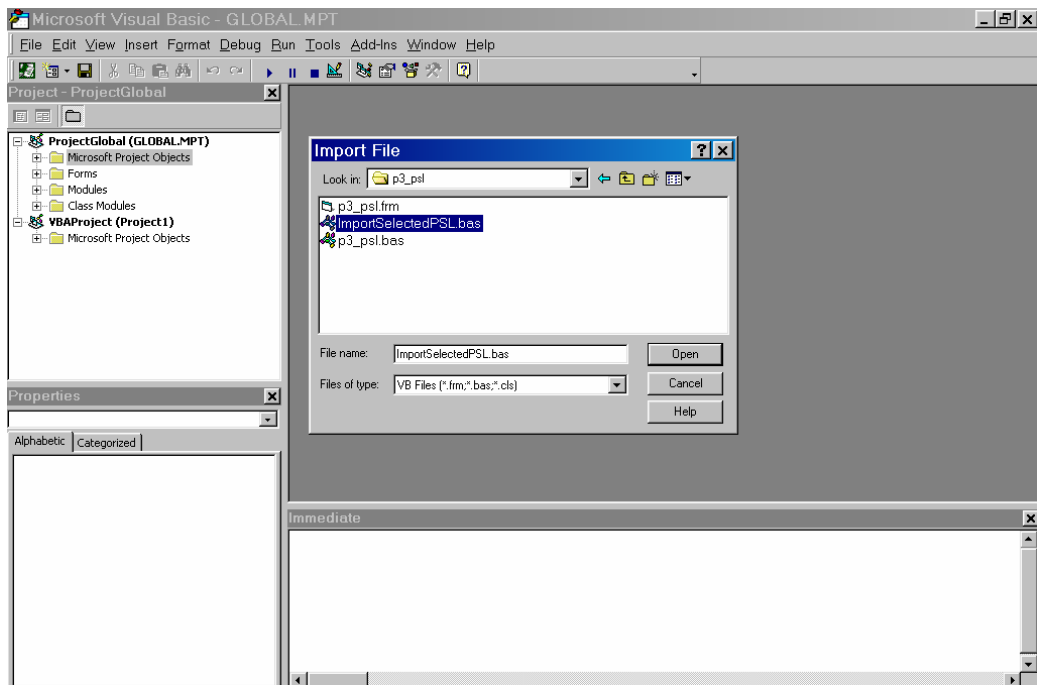
Open a blank project of Microsoft Project 2000.

Choose *Tools, Macro*, then click *Visual Basic Editor*.



In the *Visual Basic Editor*, choose *File*, then click *Import File*.
Select the program directory, in the example, *C:/P3WIN/p3_psl/*

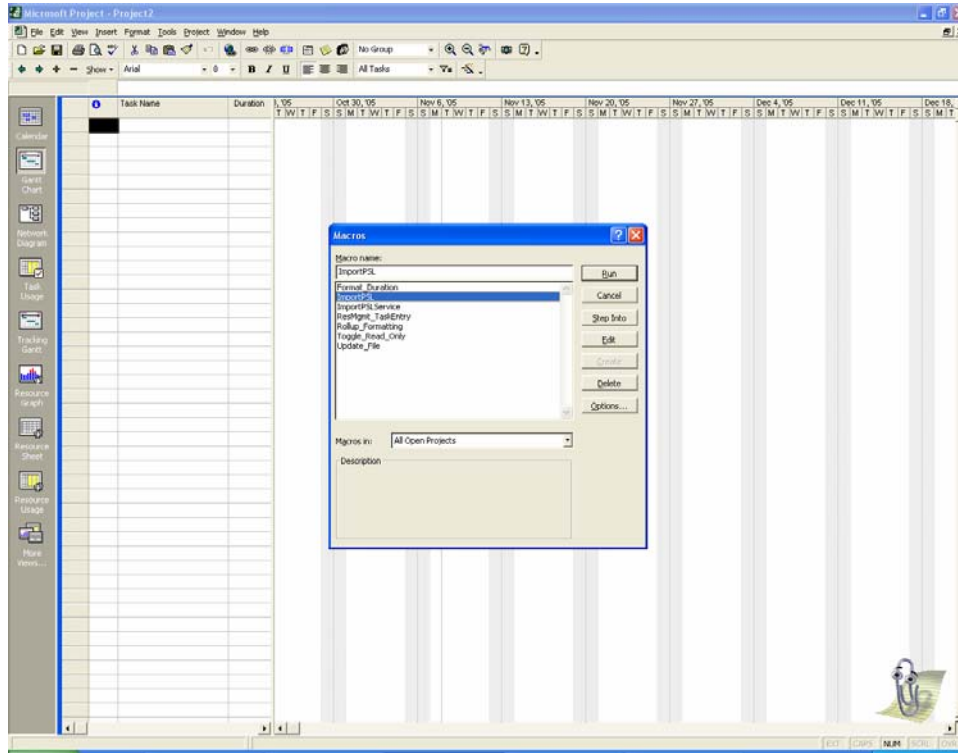
Click **ImportSelectedPSL.bas**, then open it.



4. Run the Macro

In the *Microsoft Project 2000*, choose *Tools, Macro*, then click *Macros*.

Choose **ImportPSL**, then click **Run**.



In the message box appeared, type the PSL file to be imported. In the example, it is *C:\P3WIN\MCDO.psl*

